

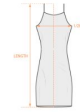
Dresses

*Harmony
Designs*

A large, elegant black decorative flourish consisting of several sweeping, curved lines that start from the left and end on the right, positioned below the brand name.

Women's Sleeveless Cami Dress

\$25.00



Inch	S	M	L	XL	2XL	3XL	4XL	5XL
Length	37.4	37.8	38.2	38.6	39.0	39.4	39.8	40.2
Bust	37.0	38.6	40.9	43.3	45.7	48.0	50.4	52.8

centimeter	S	M	L	XL	2XL	3XL	4XL	5XL
Length	95.0	96.0	97.0	98.0	99.0	100.0	101.0	102.0
Bust	94.0	98.0	104.0	110.0	116.0	122.0	128.0	134.0

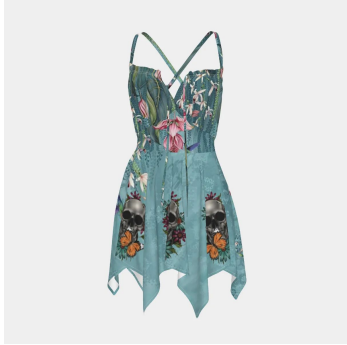
This size guide shows product measurements taken when products are laid flat. Actual product measurements may vary by up to 1".

The neck strap design can well support the dress, skin-friendly and breathable will not make you feel uncomfortable, the hem is a fan-shaped design, which fits the body shape more perfectly. Can be worn on the beach and other occasions.

- Fabric: Jersey (95% polyester and 5% spandex)
- Regular fit
- Sleeveless, Crew neck, Spaghetti straps, Elastic shoulder strap
- Fabric weight: 180g/m²
- Stitch Color: black or white, automatically matched based on patterns.
- Care Instruction: machine wash cold with similar colors, do not bleach, tumble dry low, do not iron, do not dry clean.
- This product is made on demand, with no minimum order quantity.
- Multiple shipping methods available, and fees vary depending on the location and the shipping method selected.

Women's Slip Dress

\$27.90



inch	XS	S	M	L	XL	2XL	3XL	4XL	5XL
Length	39.0	39.6	40.2	40.7	41.3	41.9	42.5	43.1	43.7
Bust	29.9	31.9	33.9	35.8	37.8	39.8	41.7	43.7	45.7
Waist	22.0	24.0	26.0	28.0	29.9	31.9	33.9	35.8	37.8

centimeter	XS	S	M	L	XL	2XL	3XL	4XL	5XL
Length	99.0	100.5	102.0	103.5	105.0	106.5	108.0	109.5	111.0
Bust	76.0	81.0	86.0	91.0	96.0	101.0	106.0	111.0	116.0
Waist	56.0	61.0	66.0	71.0	76.0	81.0	86.0	91.0	96.0

This size guide shows product measurements taken when products are laid flat. Actual product measurements may vary by up to 1".

Suitable for hanging out or going to beaches; Sleeveless design and nice style can make you more fashion and sexy.

- Fabric : Jersey(95% polyester and 5% spandex)
- Regular fit
- Sleeveless beach dress
- Fabric weight: 180g/m²
- Thread Color: black or white for a single piece, automatically chosen using color approximation. Can not be customized.
- Average Production Time: 2-4 business days (The first month delivery of new products is about 7 business days)
- Care Instruction: machine wash cold with similar colors, do not bleach, tumble dry low, do not iron, do not dry clean.
- This product is made on demand, with no minimum order quantity.
- Multiple shipping methods available, and fees vary depending on the location and the shipping method selected.
- Notice: a variety of factors may cause slight differences between the actual product and the mock-up, including but not limited to colors and precision of elements position.

Women's O-neck Cami Dress

\$25.95



inch	S	M	L	XL	2XL	3XL	4XL	5XL
Length	37.4	37.8	38.2	38.6	39.0	39.4	39.8	40.2
Bust	36.2	37.8	40.2	42.5	44.9	47.2	49.6	52.0

centimeter	S	M	L	XL	2XL	3XL	4XL	5XL
Length	95.0	96.0	97.0	98.0	99.0	100.0	101.0	102.0
Bust	92.0	96.0	102.0	108.0	114.0	120.0	126.0	132.0

This size guide shows product measurements taken when products are laid flat. Actual product measurements may vary by up to 1".

Skin-friendly and breathable, the hem is a fan-shaped design, which fits the body shape more perfectly. Can be worn on the beach and other occasions

- Fabric: Jersey (95% polyester and 5% spandex)
- Regular fit
- Sleeveless, Crew neck, Spaghetti straps
- Fabric weight: 180g/m²
- Stitch Color: black or white, automatically matched based on patterns.
- Average Lead Time: 2-4 business days (The first month delivery of new products is about 7 business days)
- Care Instruction: machine wash cold with similar colors, do not bleach, tumble dry low, do not iron, do not dry clean.
- This product is made on demand, with no minimum order quantity.
- Multiple shipping methods available, and fees vary depending on the location and the shipping method selected.
- Notice: a variety of factors may cause slight differences between the actual product and the mock-up, including but not limited to colors and precision of elements position.

Women's Round Neck Above Knee Dress

\$26.08



SIZE CHART

Note: This size guide shows product measurements taken when products are laid flat. Actual product measurements may vary by up to 3cm. Please check and compare the size carefully before buying.

Inch	XS	S	M	L	XL	2XL	3XL
Length	28.5	29.1	29.7	30.3	30.9	31.5	32.1
Bust	33.9	35.4	37	39.4	41.7	44.1	46.5

centimeter	XS	S	M	L	XL	2XL	3XL
Length	72.5	74	75.5	77	78.5	80	81.5
Bust	86	90	94	100	106	112	118

Perfect sexy dress in this summer. The metal half moon ring and halter strap outline a sexy and charming curve

- Fabric: Microfiber(95% polyester and 5% spandex)
- Regular fit
- Crew neck, golden half moon ring, halter cami
- Fabric weight: 180g/m²
- Stitch Color: black or white, automatically matched based on patterns.
- Average Lead Time: 2-4 business days(The first month delivery of new products is about 7 business days)
- Care Instruction: machine wash cold with similar colors, do not bleach, tumble dry low, do not iron, do not dry clean.
- This product is made on demand, with no minimum order quantity.
- Multiple shipping methods available, and fees vary depending on the location and the shipping method selected.
- Notice: a variety of factors may cause slight differences between the actual product and the mock-up, including but not limited to colors and precision of elements position.

Women's Tank Vest Dress

\$29.49



inch	XS	S	M	L	XL	2XL	3XL	4XL	5XL
Length	32.7	33.5	34.3	35.0	35.8	36.6	37.4	38.2	39.0
Shoulder	9.4	9.8	10.2	10.8	11.4	12.0	12.6	13.2	13.4
Bust	32.3	33.9	35.4	37.8	40.2	42.5	44.9	47.2	49.6

centimeter	XS	S	M	L	XL	2XL	3XL	4XL	5XL
Length	83	85	87	89	91	93.00	95	97	99.00
Shoulder	24.0	25.0	26.0	27.5	29.0	30.5	32.0	33.5	34.0
Bust	82.0	86.0	90.0	96.0	102.0	108.0	114.0	120.0	126.0

This size guide shows product measurements taken when products are laid flat. Actual product measurements may vary by up to 1".

The clean and neat style and the design of the wide sling would make you sexy, charming and cute. You deserve this comfortable and elastic fabric of the dress

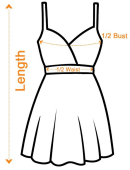
- Fabric: Microfiber(95% polyester and 5% spandex)
- Regular fit
- Scoop neckline, sleeveless
- Fabric weight: 160g/m²
- Stitch Color: black or white, automatically matched based on patterns.
- Average Production Time: 2-4 business days (The first month delivery of new products is about 7 business days)
- Care Instruction: machine wash cold with similar colors, do not bleach, tumble dry low, do not iron, do not dry clean.
- This product is made on demand, with no minimum order quantity.
- Multiple shipping methods available, and fees vary depending on the location and the shipping method selected.
- Notice: a variety of factors may cause slight differences between the actual product and the mock-up, including but not limited to colors and precision of elements position

Women's V-neck Sleeveless Cami Dress

\$26.05



SIZE CHART



Note: This size guide shows product measurements taken when products are laid flat. Actual product measurements may vary by up to 3cm. Please check and compare the size carefully before buying.

Inch	S	M	L	XL	2XL	3XL	4XL	5XL
Length	34.6	35.4	36.2	37	37.8	38.6	39.4	40.2
Bust	35.4	37	38.2	39.4	40.9	42.5	44.1	45.7
Waist	34.3	35	36.2	37.8	39.4	40.9	42.5	44.1

centimeter	S	M	L	XL	2XL	3XL	4XL	5XL
Length	88	90	92	94	96	98	100	102
Bust	90	94	97	100	104	108	112	116
Waist	87	89	92	96	100	104	108	112

Cool cami dress. It is suitable to wear when going to the beach in the hot summer.

- Fabric: Jersey(95% polyester and 5% spandex)
- Regular fit
- Spaghetti strips, v-neck, adjustable shoulder straps are not customizable
- Fabric weight: 180g/m²
- Stitch Color: black or white, automatically matched based on patterns.
- Average Lead Time: 2-4 business days(The first month delivery of new products is about 7 business days)
- Care Instruction: machine wash cold with similar colors, do not bleach, tumble dry low, do not iron, do not dry clean.
- This product is made on demand, with no minimum order quantity.
- Multiple shipping methods available, and fees vary depending on the location and the shipping method selected.
- Notice: a variety of factors may cause slight differences between the actual product and the mock-up, including but not limited to colors and precision of elements position.

Women's Stacked Ruffle Sleeve Dress

\$32.60



inch	S	M	L	XL	2XL	3XL	4XL	5XL
Length	34.6	35.4	36.2	37.0	37.8	38.6	39.4	40.2
Shoulder	15.2	15.7	16.3	17.1	17.9	18.7	19.5	20.3
Bust	37.8	39.4	41.3	43.7	46.9	50.0	53.1	56.3
Sleeve	17.7	18.1	18.5	18.9	19.3	19.7	20.1	20.5

centimeter	S	M	L	XL	2XL	3XL	4XL	5XL
Length	88	90	92	94	96	98	100	102
Shoulder	38.5	40	41.5	43.5	45.5	47.5	49.5	51.5
Bust	96	100	105	111	119	127	135	143
Sleeve	45	46	47	48	49	50	51	52

This size guide shows product measurements taken when products are laid flat. Actual product measurements may vary by up to 1".

V-shaped neckline; Raglan sleeve can make you unique and fashion; Nice fabric can provide you with all-day ease

- Fabric: Four-way stretch (95% polyester and 5% spandex)
- Regular fit. This product is inelastic.
- V-neck dress, Stacked Ruffle Sleeve
- Fabric weight: 120g/m²
- Stitch Color: black or white, automatically matched based on patterns.
- Care Instruction: machine wash cold with similar colors, do not bleach, tumble dry low, do not iron, do not dry clean.
- This product is made on demand, with no minimum order quantity.
- Multiple shipping methods available, and fees vary depending on the location and the shipping method selected.
- Notice: a variety of factors may cause slight differences between the actual product and the mock-up, including but not limited to colors and precision of elements position.

Women's V-neck Dress With Side Slit

\$33.94



Inch	S	M	L	XL	2XL	3XL
Length	50.8	51.6	52.4	53.1	53.9	54.7
Shoulder	15.6	15.9	16.3	16.7	17.1	17.5
Bust	37.8	39.4	41.3	43.3	45.3	47.2
Waist	34.6	36.2	38.2	40.2	42.1	44.1
Sleeve	7.1	7.3	7.5	7.7	7.9	8.1

centimeter	S	M	L	XL	2XL	3XL
Length	129	131	133	135	137	139
Shoulder	39.5	40.5	41.5	42.5	43.5	44.5
Bust	96	100	105	110	115	120
Waist	88	92	97	102	107	112
Sleeve	18	18.5	19	19.5	20	20.5

This size guide shows product measurements taken when products are laid flat. Actual product measurements may vary by up to 1".

The soft and comfortable fabric, the small design with side slits, and the V-neckline are suitable for commuting, beach and other scenes.

- Fabric: Jersey(95% polyester and 5% spandex)
- Regular fit
- V-neck, short sleeve, side split
- Fabric weight: 180g/m²
- Care Instruction: machine wash cold with similar colors, do not bleach, tumble dry low, do not iron, do not dry clean.
- This product is made on demand, with no minimum order quantity.
- Multiple shipping methods available, and fees vary depending on the location and the shipping method selected.
- Notice: a variety of factors may cause slight differences between the actual product and the mock-up, including but not limited to colors and precision of elements position.

Women's High Neck Dress With Long Sleeve

\$30.01



inch	S	M	L	XL	2XL	3XL
Length	35.4	36.0	36.6	37.2	37.8	38.4
Shoulder	16.9	17.3	17.7	18.3	18.9	19.7
Bust	37.8	39.4	41.3	43.3	45.3	47.2
Sleeve	22.4	22.8	23.2	23.6	24.0	24.4

centimeter	S	M	L	XL	2XL	3XL
Length	90	91.5	93	94.5	96	97.5
Shoulder	43	44	45	46.5	48	50
Bust	96	100	105	110	115	120
Sleeve	57	58	59	60	61	62

This size guide shows product measurements taken when products are laid flat. Actual product measurements may vary by up to 1".

A dress suitable for autumn. The high-neck design can protect your neck. The comfortable fabric will not be stuffy and breathable.

- Fabric: Microfiber(95% polyester and 5% spandex)
- Regular fit
- High neck, long sleeve, crew neck
- Fabric weight: 180g/m²
- Thread Color: black, white or red for a single piece, automatically chosen using color approximation. Can not be customized.
- Care Instruction: machine wash cold with similar colors, do not bleach, tumble dry low, do not iron, do not dry clean.
- This product is made on demand, with no minimum order quantity.
- Multiple shipping methods available, and fees vary depending on the location and the shipping method selected. Notice: a variety of factors may cause slight differences between the actual product and the mock-up, including but not limited to colors and precision of elements position.

Women's Off-shoulder Back Lace-up Dress

\$29.94



inch	S	M	L	XL	2XL	3XL	4XL	5XL
Length	23.6	24.4	25.2	26.0	26.8	27.6	28.3	29.1
Bust	33.5	35.4	37.4	39.4	41.3	43.3	45.3	47.2
Waist	24.0	26.4	28.7	31.1	33.5	35.8	38.2	40.6

centimeter	S	M	L	XL	2XL	3XL	4XL	5XL
Length	60.0	62.0	64.0	66.0	68.0	70.0	72.0	74.0
Bust	85.0	90.0	95.0	100.0	105.0	110.0	115.0	120.0
Waist	61.0	67.0	73.0	79.0	85.0	91.0	97.0	103.0

This size guide shows product measurements taken when products are laid flat. Actual product measurements may vary by up to 1".

Sexy off-shoulder tube top dress, soft and comfortable to wear. Suitable for christmas gift ,evening party, cocktail and clubwear, and daily wearing.

- Fabric: Microfiber (88% polyester and 12% spandex)
- Skinny fit
- Off-shoulder, Back lace-up, long sleeve, tube top
- Fabric weight: 210g/m²
- Stitch Color: black or white, automatically matched based on patterns.
- Average Lead Time: 2-4 business days (The first month delivery of new products is about 7 business days)
- Care Instruction: machine wash cold with similar colors, do not bleach, tumble dry low, do not iron, do not dry clean.
- This product is made on demand, with no minimum order quantity.
- Multiple shipping methods available, and fees vary depending on the location and the shipping method selected. Notice: a variety of factors may cause slight differences between the actual product and the mock-up, including but not limited to colors and precision of elements position.

Women's Elastic Waist Dress

\$32.88



inch	XS	S	M	L	XL	2XL	3XL
Length	47.6	48.4	49.2	50.0	50.8	51.6	52.4
Shoulder	20.5	21.3	22.0	23.0	24.0	25.0	26.0
Bust	37.4	39.0	40.6	42.5	44.5	46.5	48.4
Waist	23.6	25.2	26.8	28.7	30.7	32.7	34.6
Sleeve	7.3	7.5	7.7	7.9	8.1	8.3	8.5

centimeter	XS	S	M	L	XL	2XL	3XL
Length	121	123	125	127	129	131	133
Shoulder	52	54	56	58.5	61	63.5	66
Bust	95	99	103	108	113	118	123
Waist	60	64	68	73	78	83	88
Sleeve	18.5	19	19.5	20	20.5	21	21.5

This size guide shows product measurements taken when products are laid flat. Actual product measurements may vary by up to 1".

Suitable for anyone to wear as it's regular fit; Unique design of waist can make you fashion

- Fabric: Four-way stretch (95% polyester and 5% spandex)
- Regular fit; This product is inelastic
- Elastic waist dress
- Fabric weight: 120g/m²
- Thread Color: black or white for a single piece, automatically chosen using color approximation. Can not be customized.
- Care Instruction: machine wash cold with similar colors, do not bleach, tumble dry low, do not iron, do not dry clean.
- This product is made on demand, with no minimum order quantity.
- Multiple shipping methods available, and fees vary depending on the location and the shipping method selected. Notice: a variety of factors may cause slight differences between the actual product and the mock-up, including but not limited to colors and precision of elements position.

Women's One-shoulder Dress With Waist Shirring

\$30.38



inch	XS	S	M	L	XL	2XL
Length	36.2	36.6	37.0	37.4	37.8	38.2
Waist	30.7	32.3	33.9	36.2	38.6	40.9
Bust	34.6	36.2	37.8	40.2	42.5	44.9

centimeter	XS	S	M	L	XL	2XL
Length	92.0	93.0	94.0	95.0	96.0	97.0
Waist	78.0	82.0	86.0	92.0	98.0	104.0
Bust	88.0	92.0	96.0	102.0	108.0	114.0

size guide shows product measurements taken when products are laid flat. Actual product measurements may vary by up to 1".

This Casual Dress For Women Will Perfectly Meet All Your Fashion Style Meet Whatever You Pair With, Like Small Accessories, Denim Outfits, Coat, Cardigan, High Heels, Sandals. This Women Ruched Bodycon Dress Always Can Create A Variety Of Style And Adapt To Different Temperatures And Every Season Spring Summer Fall Winter

- Fabric: Jersey(95% polyester and 5% spandex)
- Skinny fit
- One shoulder strapless, waist shirring
- Fabric weight: 180g/m²
- Stitch Color: black or white, automatically matched based on patterns.
- Average Production Time: 2-4 business days(The first month delivery of new products is about 7 business days)
- Care Instruction: machine wash cold with similar colors, do not bleach, tumble dry low, do not iron, do not dry clean.
- This product is made on demand, with no minimum order quantity.
- Multiple shipping methods available, and fees vary depending on the location and the shipping method selected. Notice: a variety of factors may cause slight differences between the actual product and the mock-up, including but not limited to colors and precision of elements position.

Women's Imitation Silk V-neck Kaftan Robe

\$34.16



inch	S	M
Length	49.2	50.0
Shoulder	49.2	51.2

centimeter	S	M
Length	125.0	127.0
Shoulder	125.0	130.0

This size guide shows product measurements taken when products are laid flat. Actual product measurements may vary by up to 1".

A must-have clothing for traveling to the seaside. Being long enough, it can protect you from being exposed under the hot sun. It is light and thin enough and you should never worry about the stuffiness. It can leave a good record with you at the beach.

- Fabric: Imitation Silk(97% polyester and 3% spandex)
- Regular fit
- V-neck
- Fabric weight: 90g/m²
- Stitch Color: black or white, automatically matched based on patterns.
- Care Instruction: machine wash cold with similar colors, do not bleach, tumble dry low, do not iron, do not dry clean.
- This product is made on demand, with no minimum order quantity.
- Multiple shipping methods available, and fees vary depending on the location and the shipping method selected. Notice: a variety of factors may cause slight differences between the actual product and the mock-up, including but not limited to colors and precision of elements position.

Women's Bodycon Dress

\$26.12



inch	S	M	L	XL	2XL	3XL
Bust	27.6	30.3	33.1	35.8	38.6	41.3
Waist	22.8	25.6	28.3	31.1	33.9	36.6
Hip	29.9	32.7	35.4	38.2	40.9	43.7
Length	30.7	31.5	32.3	33.1	33.9	34.6
Shoulder	9.3	9.6	9.9	10.2	10.5	10.8
Swing	28.7	31.5	34.3	37.0	39.8	42.5

centimeter	S	M	L	XL	2XL	3XL
Bust	70	77	84	91	98	105
Waist	58	65	72	79	86	93
Hip	76	83	90	97	104	111
Length	78	80	82	84	86	88
Shoulder	23.5	24.5	25.2	26	26.7	27.5
Swing	73	80	87	94	101	108

This size guide shows product measurements taken when products are laid flat. Actual product measurements may vary by up to 1".

Cozy, stretchy and breathable; very suitable for holiday party need to match the jacket in winter.

- Fabric: Micro Fiber(88% polyester and 12% spandex)
- Skinny fit
- Soft and comfortable fabric, U-neck, Sling sleeveless.
- Fabric weight: 220g/m²
- Stitch Color: black or white, automatically matched based on patterns.
- Average Lead Time: 2-4 business days
- Care Instruction: machine wash cold with similar colors, do not bleach, tumble dry low, do not iron, do not dry clean.
- This product is made on demand, with no minimum order quantity.
- Multiple shipping methods available, and fees vary depending on the location and the shipping method selected. Notice: a variety of factors may cause slight differences between the actual product and the mock-up, including but not limited to colors and precision of elements position.

Women's Night Long Dress With Pocket

\$31.17



inch	S	M	L	XL	2XL	3XL	4XL	5XL
Length	53.5	54.3	55.1	55.9	56.7	57.5	58.3	59.1
Shoulder	30.9	31.9	32.9	33.9	35.2	36.6	38.0	39.4
Bust	39.4	41.3	43.3	45.3	48.0	50.8	53.5	56.3

centimeter	S	M	L	XL	2XL	3XL	4XL	5XL
Length	136.0	138.0	140.0	142.0	144.0	146.0	148.0	150.0
Shoulder	78.5	81.0	83.5	86.0	89.5	93.0	96.5	100.0
Bust	100.0	105.0	110.0	115.0	122.0	129.0	136.0	143.0

It can be used as home clothes, which is soft and comfortable; It can also be worn outside for daily wear. It is suitable for leisure, daily commuting and other occasions.

- Fabric: Microfiber(95% polyester and 5% spandex)
- Regular fit
- Drop-shoulder, short sleeve, two pocket
- Fabric weight: 170g/m²
- Stitch Color: black or white, automatically matched based on patterns.
- Care Instruction: machine wash cold with similar colors, do not bleach, tumble dry low, do not iron, do not dry clean.
- This product is made on demand, with no minimum order quantity.
- Multiple shipping methods available, and fees vary depending on the location and the shipping method selected. Notice: a variety of factors may cause slight differences between the actual product and the mock-up, including but not limited to colors and precision of elements position.

Women's Halter Lace-up Dress

\$26.83



inch	XS	S	M	L	XL	2XL
Length	26.8	27.4	28.0	28.7	29.5	30.3
Bust	31.1	32.7	34.3	36.6	39.0	41.3
Sleeve	19.9	20.3	20.7	20.9	21.3	21.5
Waist	24.4	26.0	27.6	29.9	32.3	34.6
Hip	29.9	31.5	33.1	35.4	37.8	40.2

centimeter	XS	S	M	L	XL	2XL
Length	68	69.5	71	73	75	77
Bust	79	83	87	93	99	105
Sleeve	50.5	51.5	52.5	53	54	54.5
Waist	62	66	70	76	82	88
Hip	76	80	84	90	96	102

This size guide shows product measurements taken when products are laid flat. Actual product measurements may vary by up to 1".

Dress features a cropped cut, off the shoulder detail with long sleeves, a halterneck, stretch and lined. It's a sexy women's dress

- Fabric: Lustre Clothes(88% polyester and 12% spandex)
- Regular fit
- Long sleeve, halter neck, off-shoulder, lining on the chest
- Fabric weight: 190g/m²
- Printing process: Transfer printing.
- Care Instruction: machine wash cold with similar colors, do not bleach, tumble dry low, do not iron, do not dry clean.
- This product is made on demand, with no minimum order quantity.
- Multiple shipping methods available, and fees vary depending on the location and the shipping method selected. Notice: a variety of factors may cause slight differences between the actual product and the mock-up, including but not limited to colors and precision of elements position.

Women's V-neck Long Sleeve Dress(Plus Size)

\$29.07



Inch	L	XL	2XL	3XL	4XL	5XL
Length	35.4	36.2	37.0	37.8	38.6	39.4
Shoulder	15.2	15.7	16.3	16.9	17.5	18.1
Bust	36.2	38.6	40.9	43.3	45.7	48.8
Sleeve	22.8	23.2	23.7	24.2	24.6	25.1
Waist	31.5	33.9	36.2	38.6	40.9	43.3

centimeter	L	XL	2XL	3XL	4XL	5XL
Length	90	92	94	96	98	100
Shoulder	38.5	40	41.5	43	44.5	46
Bust	92	98	104	110	116	124
Sleeve	57.8	59	60.2	61.4	62.6	63.8
Waist	80	86	92	98	104	110

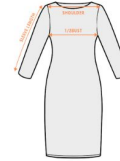
This size guide shows product measurements taken when products are laid flat. Actual product measurements may vary by up to 1".

Classic V-neck, matching long-sleeved dress, the fabric is very comfortable and soft, it will be very comfortable to wear, you can wear it with a jacket

- Fabric: Microfiber(95% polyester and 5% polyester)
- Regular fit
- V-neck, long sleeve
- Fabric weight: 170g/m²
- Care Instruction: machine wash cold with similar colors, do not bleach, tumble dry low, do not iron, do not dry clean.
- This product is made on demand, with no minimum order quantity.
- Multiple shipping methods available, and fees vary depending on the location and the shipping method selected. Notice: a variety of factors may cause slight differences between the actual product and the mock-up, including but not limited to colors and precision of elements position.

Women's Vest Dress | Length To Ankle

\$30.50



inch	XS	S	M	L	XL	2XL
Length	55.9	57.1	58.3	59.4	60.6	61.8
Bust	31.5	33.1	34.6	37.0	39.4	41.7

centimeter	XS	S	M	L	XL	2XL
Length	142.0	145.0	148.0	151.0	154.0	157.0
Bust	80.0	84.0	88.0	94.0	100.0	106.0

This size guide shows product measurements taken when products are laid flat. Actual product measurements may vary by up to 1".

Simple style, easy to match with shoes and bags. You can wear it as summer sundress, beach cover up, swimsuit dress and tank dress

- Fabric: Jersey (95% polyester and 5% spandex)
- Regular fit
- U-neck, sleeveless
- Fabric weight: 180g/m²
- Stitch Color: black or white, automatically matched based on patterns.
- Average Lead Time: 2-4 business days (The first month delivery of new products is about 7 business days)
- Care Instruction: machine wash cold with similar colors, do not bleach, tumble dry low, do not iron, do not dry clean.
- This product is made on demand, with no minimum order quantity.
- Multiple shipping methods available, and fees vary depending on the location and the shipping method selected. Notice: a variety of factors may cause slight differences between the actual product and the mock-up, including but not limited to colors and precision of elements position.

Women's V-neck Dress With Waistband(Plus Size)

\$35.97



inch	XS	S	M	L	XL	2XL	3XL	4XL
Length	36.2	37.0	37.8	38.6	39.4	40.2	40.9	41.7
Shoulder	16.9	17.3	17.7	18.3	18.9	19.5	20.1	20.7
Bust	38.6	40.2	41.7	44.1	46.5	48.8	51.2	53.5
Sleeve	23.2	23.6	24.0	24.6	25.2	25.8	26.4	27.0
Waist	24.4	26.0	27.6	29.5	31.5	33.5	35.4	37.4

centimeter	XS	S	M	L	XL	2XL	3XL	4XL
Length	92	94	96	98	100	102	104	106
Shoulder	43	44	45	46.5	48	49.5	51	52.5
Bust	98	102	106	112	118	124	130	136
Sleeve	59	60	61	62.5	64	65.5	67	68.5
Waist	62	66	70	75	80	85	90	95

This size guide shows product measurements taken when products are laid flat. Actual product measurements may vary by up to 1".

The collar is a foldable V-neck design, which can show your charming neck without being so exposed.

- Fabric: Four-way stretch(95% polyester and 5% spandex)
- Regular fit; This product is inelastic
- Long sleeve, v-neck, waist with waistband
- Fabric weight: 120g/m²
- Thread Color: black or white for a single piece, automatically chosen using color approximation. Can not be customized.
- Care Instruction: machine wash cold with similar colors, do not bleach, tumble dry low, do not iron, do not dry clean.
- This product is made on demand, with no minimum order quantity.
- Multiple shipping methods available, and fees vary depending on the location and the shipping method selected. Notice: a variety of factors may cause slight differences between the actual product and the mock-up, including but not limited to colors and precision of elements position.

Women's Dress

\$30.72



Inch	XS	S	M	L	XL	2XL	3XL	4XL	5XL	6XL
Length	37.8	38.6	39.4	40.2	40.9	41.7	42.5	43.3	44.1	44.9
Bust	31.9	33.6	34.5	35.4	36.4	37.4	39.0	40.6	42.1	43.3
Waist	25.0	26.0	27.0	28.0	29.0	30.0	31.5	33.0	34.5	36.0
Hip	35.0	36.0	37.0	38.0	39.0	40.2	41.3	42.9	44.5	46.1

centimeter	XS	S	M	L	XL	2XL	3XL	4XL	5XL	6XL
Length	96	98	100	102	104	106	108	110	112	114
Bust	81	85.4	87.6	90	92.5	95	99	103	107	110
Waist	63.5	66	68.6	71	73.7	76.2	80	83.8	87.6	91.4
Hip	88.9	91.4	94	96.5	99.1	102	105	109	113	117

This size guide shows product measurements taken when products are laid flat. Actual product measurements may vary by up to 1".

Comfortable long skirt of which the fabric is skin-friendly, soft and breathable, with a slight luster in the sun. The knee-length skirt can be paired with a pair of high-heeled sandals for an elegant look. You can also wear it with a long coat in cold weather.

- Fabric: Micro Fiber (88% polyester and 12% spandex)
- Skinny fit
- A-line, off-shoulder
- Fabric Weight: 220 g/m²
- Stitch Color: black or white, automatically matched based on patterns.
- Average Lead Time: 2-4 business days
- Care Instruction: machine wash cold with similar colors, do not bleach, tumble dry low, do not iron, do not dry clean.
- This product is made on demand, with no minimum order quantity.
- Multiple shipping methods available, and fees vary depending on the location and the shipping method selected. Notice: a variety of factors may cause slight differences between the actual product and the mock-up, including but not limited to colors and precision of elements position.

Women's Stacked Hem Dress With Short Sleeve (Plus Size)

\$30.61



Inch	L	XL	2XL	3XL	4XL	5XL
Length	32.7	33.5	34.3	35.0	35.8	36.6
Bust	37.8	40.2	42.5	44.9	47.2	49.6
Shoulder	15.2	15.7	16.3	16.9	17.5	18.1
Sleeve	8.4	8.7	8.9	9.1	9.4	9.6

centimeter	L	XL	2XL	3XL	4XL	5XL
Length	83	85	87	89	91	93
Bust	96	102	108	114	120	126
Shoulder	38.5	40	41.5	43	44.5	46
Sleeve	21.4	22	22.6	23.2	23.8	24.4

This size guide shows product measurements taken when products are laid flat. Actual product measurements may vary by up to 1".

Classic round neck, the hem is stacked design, can be worn directly with leggings or jeans, it is a very fashionable match

- Fabric: Jersey(95% polyester and 5% spandex)
- Regular fit
- Crew neck, short sleeve, stacked hem
- Fabric weight: 180g/m²
- Printing process: Transfer printing.
- Stitch Color: black or white, automatically matched based on patterns.
- Care Instruction: machine wash cold with similar colors, do not bleach, tumble dry low, do not iron, do not dry clean.
- This product is made on demand, with no minimum order quantity.
- Multiple shipping methods available, and fees vary depending on the location and the shipping method selected. Notice: a variety of factors may cause slight differences between the actual product and the mock-up, including but not limited to colors and precision of elements position.

Women's Casual Sleeveless Dress

\$26.03



Inch	XS	S	M	L	XL	2XL	3XL
Front Length	29.1	29.5	29.9	30.3	30.7	31.1	31.5
Back Length	33.9	34.3	34.6	35.0	35.4	35.8	36.2
Shoulder	11.2	11.8	12.2	12.8	13.4	14.0	14.6
Bust	33.5	35.0	37.0	39.4	42.5	45.7	48.8

centimeter	XS	S	M	L	XL	2XL	3XL
Front Length	74.0	75.0	76.0	77.0	78.0	79.0	80.0
Back Length	86.0	87.0	88.0	89.0	90.0	91.0	92.0
Shoulder	28.5	30.0	31.0	32.5	34.0	35.5	37.0
Bust	85.0	89.0	94.0	100.0	108.0	116.0	124.0

This size guide shows product measurements taken when products are laid flat. Actual product measurements may vary by up to 1".

Soft and comfortable mid-length skirt, with a nice drape and a sense of elegance

- Fabric: Jersey(95% polyester and 5% spandex.)
- Loose style
- O-neck, sleeveless
- Fabric weight: 180g/m².
- Stitch Color: black or white, automatically matched based on patterns.
- Average Lead Time: 2-4 business days (The first month delivery of new products is about 7 business days)
- Care Instruction: machine wash cold with similar colors, do not bleach, tumble dry low, do not iron, do not dry clean.
- This product is made on demand, with no minimum order quantity.
- They are not medical grade, so they are not suitable for medical use and can only be worn daily
- Multiple shipping methods available, and fees vary depending on the location and the shipping method selected. Notice: a variety of factors may cause slight differences between the actual product and the mock-up, including but not limited to colors and precision of elements position.

Women's Hip Dress

\$32.81



Inch	S	M	L	XL	2XL	3XL
Length	50.8	51.6	52.4	53.1	53.9	54.7
Shoulder	15.6	15.9	16.3	16.7	17.1	17.5
Bust	37.8	39.4	41.3	43.3	45.3	47.2
Waist	34.6	36.2	38.2	40.2	42.1	44.1
Sleeve	7.1	7.3	7.5	7.7	7.9	8.1

centimeter	S	M	L	XL	2XL	3XL
Length	129	131	133	135	137	139
Shoulder	39.5	40.5	41.5	42.5	43.5	44.5
Bust	96	100	105	110	115	120
Waist	88	92	97	102	107	112
Sleeve	18	18.5	19	19.5	20	20.5

This size guide shows product measurements taken when products are laid flat. Actual product measurements may vary by up to 1".

Sexy close-fitting hip skirt with zipper opening and closing, both sides can be worn as the front, you can mix and match at will

- Fabric: Microfiber(88% polyester and 12% spandex)
- Skinny fit
- Zipper closure, turtleneck.
- Fabric weight: 210 g/m²
- Thread Color: black or white for a single piece, automatically chosen using color approximation. Can not be customized.
- Average Lead Time: 2-4 business days (The first month delivery of new products is about 7 business days)
- Care Instruction: machine wash cold with similar colors, do not bleach, tumble dry low, do not iron, do not dry clean.
- This product is made on demand, with no minimum order quantity.
- Multiple shipping methods available, and fees vary depending on the location and the shipping method selected.
- Notice:a variety of factors may cause slight differences between the actual product and the mock-up, including but not limited to colors and precision of elements position.

Women's Sleeveless Dress With Diagonal Pocket

\$35.96



Inch	XS	S	M	L	XL	2XL
Length	44.1	44.9	45.7	46.5	47.2	48.0
Shoulder	11.8	12.2	12.6	13.0	13.4	13.8
Bust	33.1	34.6	36.2	38.2	40.2	42.1
Waist	31.1	32.7	34.3	36.2	38.2	40.2

centimeter	XS	S	M	L	XL	2XL
Length	112	114	116	118	120	122
Shoulder	30	31	32	33	34	35
Bust	84	88	92	97	102	107
Waist	79	83	87	92	97	102

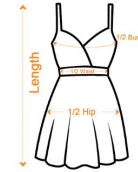
This size guide shows product measurements taken when products are laid flat. Actual product measurements may vary by up to 1".

Sleeveless long skirt, classic round neck, two diagonal pockets on the side, allowing you to pose many casual poses

- Fabric: Jersey(95% polyester and 5% spandex)
- Regular fit
- Sleeveless,diagonal pocket,crew neck
- Fabric weight: 180g/m²
- Printing process:Transfer printing.
- Thread Color: black or white for a single piece, automatically chosen using color approximation. Can not be customized.
- Care Instruction: machine wash cold with similar colors, do not bleach, tumble dry low, do not iron, do not dry clean.
- This product is made on demand, with no minimum order quantity.
- Multiple shipping methods available, and fees vary depending on the location and the shipping method selected.Notice: a variety of factors may cause slight differences between the actual product and the mock-up, including but not limited to colors and precision of elements position.

Women's Back Cross Cami Dress

\$27.17



inch	XS	S	M	L	XL	2XL
Length	37.0	37.8	38.6	39.4	40.2	40.9
Bust	29.9	31.5	33.1	34.6	36.2	37.8
Waist	25.2	26.8	28.3	29.9	31.5	33.1
Hip	33.1	34.6	36.2	37.8	39.4	40.9

centimeter	XS	S	M	L	XL	2XL
Length	94.0	96.0	98.0	100.0	102.0	104.0
Bust	76.0	80.0	84.0	88.0	92.0	96.0
Waist	64.0	68.0	72.0	76.0	80.0	84.0
Hip	84.0	88.0	92.0	96.0	100.0	104.0

This size guide shows product measurements taken when products are laid flat. Actual product measurements may vary by up to 1".

Sexy knitted suspender skirt, side slit design can properly show the shape of the legs, the back suspenders are crossed, and the beautiful back is outlined

- Fabric: Jersey(95% polyester and 5% spandex)
- Skinny fit
- Spaghetti straps, cross back tie, side split
- Fabric weight: 180g/m²
- Stitch Color: black or white, automatically matched based on patterns
- Average Lead Time: 2-4 business days (The first month delivery of new products is about 7 business days)
- Care Instruction: machine wash cold with similar colors, do not bleach, tumble dry low, do not iron, do not dry clean.
- This product is made on demand, with no minimum order quantity.
- Multiple shipping methods available, and fees vary depending on the location and the shipping method selected. Notice: a variety of factors may cause slight differences between the actual product and the mock-up, including but not limited to colors and precision of elements position.

Women's Tight Dress

\$36.72



centimeter	S	M	L	XL	2XL
Length	84.0	86.0	88.0	90.0	92.0
Sleeve	47.0	48.0	49.0	50.0	51.0
Bust	92.0	98.0	104.0	110.0	116.0

inch	S	M	L	XL	2XL
Length	33.1	33.9	34.6	35.4	36.2
Sleeve	18.5	18.9	19.3	19.7	20.1
Bust	36.2	38.6	40.9	43.3	45.7

This size guide shows product measurements taken when products are laid flat. Actual product measurements may vary by up to 1".

The Long Tunic Sweatshirts With stretchy and soft fabric.Suitable for Spring Autumn and Winter Seasons; Kangaroo pocket on the front to keep you hands warm.The fabric is skin-friendly and soft, and the strapless design is more sexy

- Fabric: 95% polyester and 5% spandex
- Skinny fit
- Front Kangaroo packet, off-shoulder, hood with drawstring
- Fabric weight: 230 g/m²
- Stitch Color: black or white, automatically matched based on patterns.
- Average Lead Time: 2-4 business days (The first month delivery of new products is about 7 business days)
- Care Instruction: machine wash cold with similar colors, do not bleach, tumble dry low, do not iron, do not dry clean.
- This product is made on demand, with no minimum order quantity.
- Multiple shipping methods available, and fees vary depending on the location and the shipping method selected.Notice: a variety of factors may cause slight differences between the actual product and the mock-up, including but not limited to colors and precision of elements position.

Women's Wrap Hem Belted Halter Dress

\$30.82



inch	XS	S	M	L	XL	2XL
Length	49.6	50.4	51.2	52.0	52.8	53.5
Waist	35.8	37.4	39.0	41.3	43.7	46.1
Bust	35.8	37.4	39.0	41.3	43.7	46.1
Belt Length	64.6	64.6	67.7	67.7	70.9	70.9
Neck	16.1	16.9	17.7	18.5	19.2	20.0

centimeter	XS	S	M	L	XL	2XL
Length	126	128	130	132	134	136
Waist	91	95	99	105	111	117
Bust	91	95	99	105	111	117
Belt Length	164	164	172	172	180	180
Neck	41	43	45	47	49	51

This size guide shows product measurements taken when products are laid flat. Actual product measurements may vary by up to 1".

No matter what style you are, this maxi sundress is a good choice for your summer. The vivid print can perfectly show your personality, and make you feel confident.

- Fabric: 100% polyester
- Skinny fit
- Waist tie, side slit
- Fabric weight: 80g/m²
- Thread Color: black or white for a single piece, automatically chosen using color approximation. Can not be customized.
- Care Instruction: machine wash cold with similar colors, do not bleach, tumble dry low, do not iron, do not dry clean.
- This product is made on demand, with no minimum order quantity.
- Multiple shipping methods available, and fees vary depending on the location and the shipping method selected. For the knotted area, please refer to the canvas section (section in the middle) as the benchmark since mock-up may not display the precise result for certain images.
- Notice: a variety of factors may cause slight differences between the actual product and the mock-up, including but not limited to colors and precision of elements position.

Women's Zip Front Tight Dress

\$28.89



inch	XS	S	M	L	XL	2XL
Length	30.7	31.5	32.3	33.1	33.9	34.6
Bust	30.7	33.1	35.4	37.8	40.2	42.5
Hip	31.5	33.9	36.2	38.6	40.9	43.3
Waist	24.4	26.8	29.1	31.5	33.9	36.2

centimeter	XS	S	M	L	XL	2XL
Length	78.0	80.0	82.0	84.0	86.0	88.0
Bust	78.0	84.0	90.0	96.0	102.0	108.0
Hip	80.0	86.0	92.0	98.0	104.0	110.0
Waist	62.0	68.0	74.0	80.0	86.0	92.0

This size guide shows product measurements taken when products are laid flat. Actual product measurements may vary by up to 1".

These sexy bodycon dresses are comfortable, ultra-soft, breathable, and stretchable. The fabric is full of elastic that can fit your body better without seeing through.

- Fabric: Jersey(95% polyester and 5% spandex)
- Skinny fit
- Zipper closure
- Fabric weight: 180g/m²
- Thread Color: black or white for a single piece, automatically chosen using color approximation. Can not be customized.
- Average Lead Time: 2-4 business days (The first month delivery of new products is about 7 business days)
- Care Instruction: machine wash cold with similar colors, do not bleach, tumble dry low, do not iron, do not dry clean.
- This product is made on demand, with no minimum order quantity.
- Multiple shipping methods available, and fees vary depending on the location and the shipping method selected. Notice: a variety of factors may cause slight differences between the actual product and the mock-up, including but not limited to colors and precision of elements position.

Women's Cami Dress

\$28.95



inch	S	M	L	XL	2XL	3XL	4XL	5XL
Length	50.8	51.6	52.4	53.1	53.9	54.7	55.5	56.3
Bust	32.3	33.9	35.4	37.8	40.2	42.5	44.9	47.2
Waist	95.0	95.0	100.0	105.0	110.0	116.0	110.0	116.0

centimeter	S	M	L	XL	2XL	3XL	4XL	5XL
Length	129.0	131.0	133.0	135.0	137.0	139.0	141.0	143.0
Bust	82.0	86.0	90.0	96.0	102.0	108.0	114.0	120.0
Waist	82.0	86.0	90.0	96.0	102.0	108.0	114.0	120.0

This size guide shows product measurements taken when products are laid flat. Actual product measurements may vary by up to 1".

Cool cami dress, suitable to wear when going to the beach in the hot summer; Nice fabric can provide with all-day ease

- Fabric: Jersey(95% polyester and 5% spandex)
- Regular fit
- V-neck, Cami dress
- Fabric weight: 180g/m²
- Stitch Color: black or white, automatically matched based on patterns.
- Care Instruction: machine wash cold with similar colors, do not bleach, tumble dry low, do not iron, do not dry clean.
- This product is made on demand, with no minimum order quantity.
- Multiple shipping methods available, and fees vary depending on the location and the shipping method selected. Notice: a variety of factors may cause slight differences between the actual product and the mock-up, including but not limited to colors and precision of elements position.

Women's Tie Back Wrap Dress

\$33.72



inch	S	M	L	XL
Upper Length	7.5	7.9	8.3	8.7
Underbust	28.0	29.5	31.9	34.3
Dress Length	41.7	42.5	43.3	44.1
Waist	26.8	28.3	30.7	33.1
Hip	42.1	43.7	46.1	48.4

centimeter	S	M	L	XL
Upper Length	19	20	21	22
Underbust	71	75	81	87
Dress Length	106	108	110	112
Waist	68	72	78	84
Hip	107	111	117	123

This size guide shows product measurements taken when products are laid flat. Actual product measurements may vary by up to 1".

Sexy bikini dress suit, the design of neck coat can show the charming back; The skirt is designed with side slits, which can make your legs slender

- Made of Microfiber(95% polyester and 5% spandex)
- Regular fit
- Two-pieces, side split, backless
- Fabric weight: 170g/m²
- Stitch Color: black or white, automatically matched based on patterns.
- Care Instruction: machine wash cold with similar colors, do not bleach, tumble dry low, do not iron, do not dry clean.
- This product is made on demand, with no minimum order quantity.
- Multiple shipping methods available, and fees vary depending on the location and the shipping method selected. Notice: a variety of factors may cause slight differences between the actual product and the mock-up, including but not limited to colors and precision of elements position.

Women's Cami Dress (Plus Size)

\$26.03



inch	L	XL	2XL	3XL	4XL
Length	27.6	28.3	29.1	29.9	30.7
Bust	33.5	35.8	38.2	40.6	42.9
Waist	31.5	33.9	36.2	38.6	40.9
Hip	40.9	43.3	45.7	48.0	50.4

centimeter	L	XL	2XL	3XL	4XL
Length	70.0	72.0	74.0	76.0	78.0
Bust	85.0	91.0	97.0	103.0	109.0
Waist	80.0	86.0	92.0	98.0	104.0
Hip	104.0	110.0	116.0	122.0	128.0

This size guide shows product measurements taken when products are laid flat. Actual product measurements may vary by up to 1".

The dress can help to show your nice body shape out; The fabric can keep you cool in hot summer

- Fabric: Microfiber(95% polyester and 5% spandex)
- Regular fit
- Cami dress; plus size
- Fabric weight: 170g/m²
- Stitch Color: black or white, automatically matched based on patterns.
- Average Lead Time: 2-4 business days
- Care Instruction: machine wash cold with similar colors, do not bleach, tumble dry low, do not iron, do not dry clean.
- This product is made on demand, with no minimum order quantity.
- Multiple shipping methods available, and fees vary depending on the location and the shipping method selected. Notice: a variety of factors may cause slight differences between the actual product and the mock-up, including but not limited to colors and precision of elements position.

Women's Sling V-Neck Cross Dress

\$30.32



inch	XS	S	M	L	XL	2XL
Length	37.0	37.8	38.6	39.4	40.2	40.9
Bust	34.6	36.2	37.8	40.2	42.5	44.9
Waist	27.6	29.1	30.7	33.1	35.4	37.8

centimeter	XS	S	M	L	XL	2XL
Length	94.0	96.0	98.0	100.0	102.0	104.0
Bust	88.0	92.0	96.0	102.0	108.0	114.0
Waist	70.0	74.0	78.0	84.0	90.0	96.0

This size guide shows product measurements taken when products are laid flat. Actual product measurements may vary by up to 1".

Design of V-neck and sling can make you fashion and sexy; Suitable for all kinds of body shape.

- Fabric: Four-way stretch(95% polyester and 5% spandex)
- Regular fit; This product is inelastic
- Sling V-neck cross dress
- Fabric weight: 120g/m²
- Thread Color: black or white for a single piece, automatically chosen using color approximation. Can not be customized.
- Care Instruction: machine wash cold with similar colors, do not bleach, tumble dry low, do not iron, do not dry clean.
- This product is made on demand, with no minimum order quantity.
- Multiple shipping methods available, and fees vary depending on the location and the shipping method selected. Notice: a variety of factors may cause slight differences between the actual product and the mock-up, including but not limited to colors and precision of elements position.

Women's Dress With Side Pocket

\$28.27



Inch	S	M	L	XL	2XL	3XL	4XL
Length	41.3	41.7	42.1	42.5	42.9	43.3	43.7
Shoulder	15.0	15.4	15.7	16.1	16.6	17.1	17.6
Bust	35.8	37.8	39.8	41.7	44.5	47.2	50.0
Waist	35.8	37.8	39.8	41.7	44.5	47.2	50.0
Sleeve	8.9	9.1	9.3	9.4	9.6	9.8	10.0

centimeter	S	M	L	XL	2XL	3XL	4XL
Length	105.0	106.0	107.0	108.0	109.0	110.0	111.0
Shoulder	38.0	39.0	40.0	41.0	42.2	43.4	44.6
Bust	91.0	96.0	101.0	106.0	113.0	120.0	127.0
Waist	91.0	96.0	101.0	106.0	113.0	120.0	127.0
Sleeve	22.5	23.0	23.5	24.0	24.5	25.0	25.5

This size guide shows product measurements taken when products are laid flat. Actual product measurements may vary by up to 1".

Classic round neck, natural hem, wrinkled design at the chest, the whole dress is very lady.

- Fabric: Jersey(95% polyester and 5% spandex)
- Regular fit
- Crew neck, with folding,
- Fabric weight: 180g/m²
- Stitch Color: black or white, automatically matched based on patterns.
- Care Instruction: machine wash cold with similar colors, do not bleach, tumble dry low, do not iron, do not dry clean.
- This product is made on demand, with no minimum order quantity.
- Multiple shipping methods available, and fees vary depending on the location and the shipping method selected. Notice: a variety of factors may cause slight differences between the actual product and the mock-up, including but not limited to colors and precision of elements position.

Women's Beach Perspective Chiffon Sleeveless Dress

\$29.33



inch	S	M	L	XL	2XL	3XL	4XL	5XL
Length	52.0	52.8	53.5	54.3	55.1	55.9	56.7	57.5
Shoulder	10.6	11.0	11.4	11.8	12.2	12.6	13.0	13.4
Bust	35.0	36.6	39.0	41.3	43.7	46.1	48.4	50.8
Waist	29.1	30.7	33.1	35.4	37.8	40.2	42.5	44.9
Hip	38.6	40.2	42.5	44.9	47.2	49.6	52.0	54.3

centimeter	XS	S	M	L	XL	2XL	3XL	4XL
Length	132.0	134.0	136.0	138.0	140.0	142.0	144.0	146.0
Shoulder	27.0	28.0	29.0	30.0	31.0	32.0	33.0	34.0
Bust	89.0	93.0	99.0	105.0	111.0	117.0	123.0	129.0
Waist	74.0	78.0	84.0	90.0	96.0	102.0	108.0	114.0
Hip	98.0	102.0	108.0	114.0	120.0	126.0	132.0	138.0

This size guide shows product measurements taken when products are laid flat. Actual product measurements may vary by up to 3cm.

The classic round neck sleeveless long skirt has a slit design at the side and a hidden zipper at the back, which makes it more beautiful. The skirt has a good drape feeling and is suitable for various scenes such as beach and seaside.

- Fabric: Chiffon(100% polyester)
- Skinny fit
- Sleeveless, side split, hidden zipper closure at back
- Fabric weight: 80g/m²
- Care Instruction: machine wash cold with similar colors, do not bleach, tumble dry low, do not iron, do not dry clean.
- This product is made on demand, with no minimum order quantity.
- Multiple shipping methods available, and fees vary depending on the location and the shipping method selected. Notice: a variety of factors may cause slight differences between the actual product and the mock-up, including but not limited to colors and precision of elements position.

Women's Long Sleeve Dress With Waist Belt

\$29.38



inch	XS	S	M	L	XL	2XL
Length	32.7	33.1	33.5	34.1	34.6	35.2
Bust	33.1	34.6	36.2	38.6	40.9	43.3
Shoulder	13.8	14.2	14.6	15.0	15.4	15.9
Sleeve	24.8	25.2	25.6	26.2	26.8	27.4
Waist	26.0	27.6	29.1	31.5	33.9	36.2
Hip	33.1	34.6	36.2	38.6	40.9	43.3

centimeter	XS	S	M	L	XL	2XL
Length	83	84	85	86.5	88	89.5
Bust	84	88	92	98	104	110
Shoulder	35	36	37	38	39	40.5
Sleeve	63	64	65	66.5	68	69.5
Waist	66	70	74	80	86	92
Hip	84	88	92	98	104	110

This size guide shows product measurements taken when products are laid flat. Actual product measurements may vary by up to 1".

The dress can show your nice body shape out; Nice fabric and good style can provide you with all-day ease

- Fabric: Microfiber(95% polyester and 5% spandex)
- Regular fit
- Long sleeve, dress
- Fabric weight: 170g/m²
- Care Instruction: machine wash cold with similar colors, do not bleach, tumble dry low, do not iron, do not dry clean.
- For the knotted area, please refer to the canvas section (section in the middle) as the benchmark since mock-up may not display the precise result for certain images.
- This product is made on demand, with no minimum order quantity.
- Multiple shipping methods available, and fees vary depending on the location and the shipping method selected. Notice: a variety of factors may cause slight differences between the actual product and the mock-up, including but not limited to colors and precision of elements position.

Women's Long Dress

\$32.42



Inch	S	M	L	XL	2XL
Length	46.9	47.6	48.4	49.2	50
Waist	41.3	42.9	44.9	46.9	48.8
Sleeve	16.5	17.1	17.5	17.9	18.5

centimeter	S	M	L	XL	2XL
Length	119	121	123	125	127
Waist	105	109	114	119	124
Sleeve	42	43.5	44.5	45.5	47

This size guide shows product measurements taken when products are laid flat. Actual product measurements may vary by up to 1".

With nice fabric and perfect style, the dress can provide you with ease all day; Can make you fashion when hanging out, joining party or going shopping

- Fabric: Four-way stretch(95% polyester and 5% spandex)
- Regular fit; This product is inelastic
- Women's long dress
- Fabric weight: 120g/m²
- Thread Color: black or white for a single piece, automatically chosen using color approximation. Can not be customized.
- Care Instruction: machine wash cold with similar colors, do not bleach, tumble dry low, do not iron, do not dry clean.
- This product is made on demand, with no minimum order quantity.
- Multiple shipping methods available, and fees vary depending on the location and the shipping method selected. Notice: a variety of factors may cause slight differences between the actual product and the mock-up, including but not limited to colors and precision of elements position.

Women's Side Split Dress With Shirt Placket

\$31.42



inch	XS	S	M	L	XL	2XL
Length	36.0	36.6	37.2	37.8	38.4	39.0
Bust	39.0	40.6	42.1	44.5	46.9	49.2
Shoulder	16.9	17.5	18.1	18.9	19.7	20.5
Sleeve	20.3	20.7	21.1	21.5	21.9	22.2

centimeter	XS	S	M	L	XL	2XL
Length	91.5	93.0	94.5	96.0	97.5	99.0
Bust	99.0	103.0	107.0	113.0	119.0	125.0
Shoulder	43.0	44.5	46.0	48.0	50.0	52.0
Sleeve	51.5	52.5	53.5	54.5	55.5	56.5

This size guide shows product measurements taken when products are laid flat. Actual product measurements may vary by up to 1".

The design of the shirt placket and neckline can be used as a loose dress or as a long shirt. It will be very fashionable when paired with jeans. There is a small slit on the side and the sleeves can be rolled up. There is a sleeve loop with buttons to fix it at any time. Can be switched between long sleeves and middle sleeves

- Fabric: Four-way stretch(95% polyester and 5% spandex)
- Regular fit; This product is inelastic
- Side split, two chest pocket, shirt placket, with sleeve loops that can be fastened with buttons
- Fabric weight: 120g/m²
- Thread Color: black or white for a single piece, automatically chosen using color approximation. Can not be customized.
- Care Instruction: machine wash cold with similar colors, do not bleach, tumble dry low, do not iron, do not dry clean.
- This product is made on demand, with no minimum order quantity.
- Multiple shipping methods available, and fees vary depending on the location and the shipping method selected. Notice: a variety of factors may cause slight differences between the actual product and the mock-up, including but not limited to colors and precision of elements position.

Women's Short Sleeve O-neck Dress

\$27.01



inch	XS	S	M	L	XL	2XL	3XL	4XL	5XL
Length	34.3	35.0	35.8	36.6	37.4	38.2	39.0	39.8	40.6
Bust	32.3	33.9	35.4	37.8	40.2	42.5	44.9	47.2	49.6
Shoulder	13.4	13.8	14.2	14.8	15.4	15.9	16.5	17.1	17.7
Waist	26.8	28.3	29.9	32.3	34.6	37.0	39.4	41.7	44.1

centimeter	XS	S	M	L	XL	2XL	3XL	4XL	5XL
Length	87.0	89.0	91.0	93.0	95.0	97.0	99.0	101.0	103.0
Bust	82.0	86.0	90.0	96.0	102.0	108.0	114.0	120.0	126.0
Shoulder	34.0	35.0	36.0	37.5	39.0	40.5	42.0	43.5	45.0
Waist	68.0	72.0	76.0	82.0	88.0	94.0	100.0	106.0	112.0

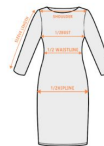
This size guide shows product measurements taken when products are laid flat. Actual product measurements may vary by up to 1".

This Long dress can show your female curve. make you more beautiful, fashion, sexy and elegant.

- Fabric: Microfiber(95% polyester and 5% spandex)
- Regular fit
- Crew neck, short sleeve
- Fabric weight: 160g/m²
- Stitch Color: black or white, automatically matched based on patterns.
- Average Lead Time: 2-4 business days(The first month delivery of new products is about 7 business days)
- Care Instruction: machine wash cold with similar colors, do not bleach, tumble dry low, do not iron, do not dry clean.
- This product is made on demand, with no minimum order quantity.
- Multiple shipping methods available, and fees vary depending on the location and the shipping method selected. Notice: a variety of factors may cause slight differences between the actual product and the mock-up, including but not limited to colors and precision of elements position.

Women's Short Sleeve V-neck Dress

\$29.59



inch	XS	S	M	L	XL	2XL	3XL
Length	42.9	43.9	44.9	45.9	46.9	47.8	48.8
Bust	32.7	34.6	36.6	38.6	40.6	42.5	44.5
Shoulder	14.0	14.4	15.0	15.6	16.3	16.9	17.7
Waist	22.8	24.8	26.8	28.7	30.7	32.7	34.6
Sleeve	10.6	10.8	11.0	11.2	11.6	11.8	11.8

centimeter	XS	S	M	L	XL	2XL	3XL
Length	109.0	111.5	114.0	116.5	119.0	121.5	124.0
Bust	83.0	88.0	93.0	98.0	103.0	108.0	113.0
Shoulder	35.5	36.5	38.0	39.5	41.5	43.0	45.0
Waist	58.0	63.0	68.0	73.0	78.0	83.0	88.0
Sleeve	27.0	27.5	28.0	28.5	29.5	30.0	30.0

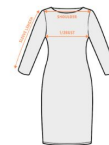
This size guide shows product measurements taken when products are laid flat. Actual product measurements may vary by up to 1".

Suitable for all kinds of body shape; Nice fabric can provide you with all-day ease; Suitable for hanging out or going to beaches.

- Fabric : Jersey(95% polyester and 5% spandex)
- Regular fit
- Short sleeve V-neck beach dress
- Fabric weight: 180g/m²
- Stitch Color: black or white, automatically matched based on patterns.
- Average Production Time: 2-4 business days (The first month delivery of new products is about 7 business days)
- Care Instruction: machine wash cold with similar colors, do not bleach, tumble dry low, do not iron, do not dry clean.
- This product is made on demand, with no minimum order quantity.
- Multiple shipping methods available, and fees vary depending on the location and the shipping method selected. Notice: a variety of factors may cause slight differences between the actual product and the mock-up, including but not limited to colors and precision of elements position.

Women's Off-shoulder Long Sleeve Dress

\$30.54



inch	XS	S	M	L	XL	2XL
Length	29.1	29.9	30.7	31.5	32.3	33.1
Bust	31.5	33.1	33.9	36.2	38.6	40.9
Hip	30.7	33.1	35.4	37.8	40.2	42.5
Waist	26.8	29.1	31.5	33.9	36.2	38.6
Sleeve	18.9	19.3	19.7	20.1	20.5	20.9

centimeter	XS	S	M	L	XL	2XL
Length	74.0	76.0	78.0	80.0	82.0	84.0
Bust	80.0	84.0	86.0	92.0	98.0	104.0
Hip	78.0	84.0	90.0	96.0	102.0	108.0
Waist	68.0	74.0	80.0	86.0	92.0	98.0
Sleeve	48.0	49.0	50.0	51.0	52.0	53.0

This size guide shows product measurements taken when products are laid flat. Actual product measurements may vary by up to 1".

Stretch and Elastic Waist, Not too tight and Shows your figure line as well, lightweight, stretchy and can fit your figure perfectly.

- Fabric: Jersey(95% polyester and 5% spandex)
- Skinny fit
- Cross wrap closure, V-neck, Off-shoulder, Elastic band at the neckline
- Fabric weight: 180g/m²
- Thread Color: black or white for a single piece, automatically chosen using color approximation. Can not be customized.
- Average Lead Time: 2-4 business days (The first month delivery of new products is about 7 business days)
- Care Instruction: machine wash cold with similar colors, do not bleach, tumble dry low, do not iron, do not dry clean.
- This product is made on demand, with no minimum order quantity.
- Multiple shipping methods available, and fees vary depending on the location and the shipping method selected. Notice: a variety of factors may cause slight differences between the actual product and the mock-up, including but not limited to colors and precision of elements position.

Women's Deep V-neck Front Cross Long Sleeve Dress

\$27.60



inch	XS	S	M	L	XL	2XL
Length	32.3	33.1	33.9	34.6	36.2	36.2
Shoulder	12.2	12.6	13.0	13.6	14.2	15.0
Waist	27.6	29.1	30.7	33.1	35.4	37.8
Bust	35.4	37.0	38.6	40.9	43.3	45.7
Sleeve	23.6	24.0	24.4	25.0	25.6	26.2

centimeter	XS	S	M	L	XL	2XL
Length	82.0	84.0	86.0	88.0	92.0	92.0
Shoulder	31.0	32.0	33.0	34.5	36.0	38.0
Waist	70.0	74.0	78.0	84.0	90.0	96.0
Bust	90.0	94.0	98.0	104.0	110.0	116.0
Sleeve	60.0	61.0	62.0	63.5	65.0	66.5

This size guide shows product measurements taken when products are laid flat. Actual product measurements may vary by up to 1".

The cross-shaped design on the front chest, although it is a deep V-neck, it will not expose a lot. Sexy and conservative styles coexist

- Fabric: 100% polyester
- Regular fit
- Deep v-neck, front cross, long sleeve
- Fabric weight: 80g/m²
- Thread Color: black or white for a single piece, automatically chosen using color approximation. Can not be customized.
- Average Production Time: 2-4 business days (The first month delivery of new products is about 7 business days)
- Care Instruction: machine wash cold with similar colors, do not bleach, tumble dry low, do not iron, do not dry clean.
- This product is made on demand, with no minimum order quantity.
- Multiple shipping methods available, and fees vary depending on the location and the shipping method selected. Notice: a variety of factors may cause slight differences between the actual product and the mock-up, including but not limited to colors and precision of elements position.

Women's Short Sleeve Dress

\$23.69



inch	S	M	L	XL	2XL	3XL	4XL
Length	34.4	35.0	35.6	36.2	36.8	37.4	38.0
Bust	36.2	37.8	40.2	42.6	44.9	47.2	49.6
Sleeve	9.1	9.4	9.8	10.4	10.8	11.4	12.0

centimeter	S	M	L	XL	2XL	3XL	4XL
Length	87.5	89.0	90.5	92.0	93.5	95.0	96.5
Bust	92.0	96.0	102.0	108.0	114.0	120.0	126.0
Sleeve	23.0	24.0	25.0	26.5	27.5	29.0	30.5

This size guide shows product measurements taken when products are laid flat. Actual product measurements may vary by up to 1".

The dress can be suitable for ladies of all body shapes; Nice fabric can provide with all-day ease and comfort

- Fabric: Jersey(95% polyester and 5% spandex)
- Regular fit
- Short sleeve dress
- Fabric weight: 180g/m²
- Stitch Color: black or white, automatically matched based on patterns.
- Average Lead Time: 2-4 business days
- Care Instruction: machine wash cold with similar colors, do not bleach, tumble dry low, do not iron, do not dry clean.
- This product is made on demand, with no minimum order quantity.
- Multiple shipping methods available, and fees vary depending on the location and the shipping method selected.
- Notice:a variety of factors may cause slight differences between the actual product and the mock-up, including but not limited to colors and precision of elements position.

Women's Cold Shoulder Dress | 190GSM Cotton

\$33.39



inch	XS	S	M	L	XL	2XL	3XL	4XL	5XL
Length	31.5	32.3	32.3	33.1	33.9	34.6	35.4	36.2	37.0
Waist	30.7	32.3	33.9	36.2	38.6	40.9	43.3	45.7	48.0
Shoulder	11.4	11.8	12.2	12.8	13.4	14.0	14.6	15.2	15.7
Bust	32.3	33.9	35.4	37.8	40.2	42.5	44.9	47.2	49.6

centimeter	XS	S	M	L	XL	2XL	3XL	4XL	5XL
Length	80.0	82.0	82.0	84.0	86.0	88.0	90.0	92.0	94.0
Waist	78.0	82.0	86.0	92.0	98.0	104.0	110.0	116.0	122.0
Shoulder	29.0	30.0	31.0	32.5	34.0	35.5	37.0	38.5	40.0
Bust	82.0	86.0	90.0	96.0	102.0	108.0	114.0	120.0	126.0

This size guide shows product measurements taken when products are laid flat. Actual product measurements may vary by up to 1".

100% Cotton fabric, skin-friendly and breathable, shoulder strapless design, can show charming shoulders and neck, can be worn daily

- Fabric: 100% Cotton
- Regular fit
- Cold shoulder, short sleeve, crew neck
- Fabric weight: 190 g/m²
- Thread Color: black or white for a single piece, automatically chosen using color approximation. Can not be customized.
- Average Production Time: 7 business days (The first month delivery of new products is about 14 business days)
- Care Instruction: machine wash cold with similar colors, line drying, do not bleach and dry clean, iron at a maximum sole-plate temperature of 110°C without steam steam ironing may cause irreversible damage.
- This product is made on demand, with no minimum order quantity.
- Multiple shipping methods available, and fees vary depending on the location and the shipping method selected. Notice: a variety of factors may cause slight differences between the actual product and the mock-up, including but not limited to colors and precision of elements position.

Women's Lantern Sleeve Dress

\$31.82



Inch	S	M	L	XL	2XL
Length	31.5	32.3	33.1	33.9	34.6
Bust	39.0	41.3	43.7	46.1	48.4
Sleeve	22.8	23.2	23.6	24.0	24.4
Shoulder	15.0	15.7	16.5	17.3	18.1

centimeter	S	M	L	XL	2XL
Length	80.0	82.0	84.0	86.0	88.0
Bust	99.0	105.0	111.0	117.0	123.0
Sleeve	58.0	59.0	60.0	61.0	62.0
Shoulder	38.0	40.0	42.0	44.0	46.0

This size guide shows product measurements taken when products are laid flat. Actual product measurements may vary by up to 1".

Made from lightweight and skin-touch, good quality stretchy fabric which skirt don't wrinkle with a nice drape to it; Waist straps can be adjusted tightly; Suitable for many occasions like business, party, prom, banquet, cocktail, work and so on

- Fabric: 100% polyester
- Loose style
- Loose belt, lantern sleeves, O-neck
- Fabric weight: 80g/m²
- Stitch Color: black or white, automatically matched based on patterns.
- For the knotted area, please refer to the canvas section (section in the middle) as the benchmark since mock-up may not display the precise result for certain images.
- Average Lead Time: 2-4 business days (The first month delivery of new products is about 7 business days)
- Care Instruction: machine wash cold with similar colors, do not bleach, tumble dry low, do not iron, do not dry clean.
- This product is made on demand, with no minimum order quantity.
- Multiple shipping methods available, and fees vary depending on the location and the shipping method selected.

Women's Waist Hollow Hip Dress

\$28.80



inch	XS	S	M	L	XL	2XL
Length	32.7	33.5	34.3	35.0	35.8	36.6
Shoulder	13.8	14.2	14.6	15.2	15.7	16.3
Bust	30.7	32.3	33.9	36.2	38.6	40.9
Hip	31.9	33.5	35.0	37.4	39.8	42.1

centimeter	XS	S	M	L	XL	2XL
Length	83.0	85.0	87.0	89.0	91.0	93.0
Shoulder	35.0	36.0	37.0	38.5	40.0	41.5
Bust	78.0	82.0	86.0	92.0	98.0	104.0
Hip	81.0	85.0	89.0	95.0	101.0	107.0

This size guide shows product measurements taken when products are laid flat. Actual product measurements may vary by up to 1".

Unique style create stunning curves, make you more beautiful, fashion, sexy and elegant.

- Fabric:Microfiber(95% polyester and 5% spandex)
- Skinny fit
- Waist hollow, long sleeve, high-necked
- Fabric weight: 180g/m²
- Stitch Color: black or white, automatically matched based on patterns.
- Average Lead Time: 2-4 business days(The first month delivery of new products is about 7 business days)
- Care Instruction: machine wash cold with similar colors, do not bleach, tumble dry low, do not iron, do not dry clean.
- This product is made on demand, with no minimum order quantity.
- Multiple shipping methods available, and fees vary depending on the location and the shipping method selected.Notice: a variety of factors may cause slight differences between the actual product and the mock-up, including but not limited to colors and precision of elements position.

Women's Sleeveless Dress

\$26.55



Inch	S	M	L	XL	2XL	3XL	4XL
Shoulder	9.3	9.4	9.6	9.8	10.0	10.2	10.4
Bust	27.6	29.1	30.7	32.7	34.6	36.2	37.8
Waist	24.8	26.4	28.0	29.5	31.1	32.7	34.3
Top Length	15.4	15.9	16.5	17.1	17.7	18.3	18.9
Skirt Length	16.5	16.9	17.3	17.7	18.1	18.5	18.9

centimeter	S	M	L	XL	2XL	3XL	4XL
Shoulder	23.5	24	24.5	25	25.5	26	26.5
Bust	70	74	78	83	88	92	96
Waist	63	67	71	75	79	83	87
Top Length	39	40.5	42	43.5	45	46.5	48
Skirt Length	42	43	44	45	46	47	48

This size guide shows product measurements taken when products are laid flat. Actual product measurements may vary by up to 1".

The dress with nice fabric and style make can make you elegant and beautiful in summer; Can be suitable for wearing to party, shopping, dating and so on

- Fabric:88% polyester and 12% spandex
- Regular fit
- Sleeveless dress
- Fabric weight: 190g/m²
- Stitch Color: black or white, automatically matched based on patterns.
- Care Instruction: machine wash cold with similar colors, do not bleach, tumble dry low, do not iron, do not dry clean.
- This product is made on demand, with no minimum order quantity.
- Multiple shipping methods available, and fees vary depending on the location and the shipping method selected. Notice: a variety of factors may cause slight differences between the actual product and the mock-up, including but not limited to colors and precision of elements position.

Women's Deep V-neck Dress With Short Sleeve

\$24.61



inch	S	M	L	XL	2XL	3XL
Length	33.5	34.3	35.0	35.8	36.6	37.4
Shoulder	15.3	15.7	16.3	16.7	17.2	17.7
Bust	35.4	37.4	39.4	41.3	43.3	45.3
Waist	33.5	35.4	37.4	39.4	41.3	43.3
Sleeve	7.5	7.9	8.3	8.7	9.1	9.4

centimeter	S	M	L	XL	2XL	3XL
Length	85.0	87.0	89.0	91.0	93.0	95.0
Shoulder	38.8	40.0	41.3	42.5	43.8	45.0
Bust	90.0	95.0	100.0	105.0	110.0	115.0
Waist	85.0	90.0	95.0	100.0	105.0	110.0
Sleeve	19.0	20.0	21.0	22.0	23.0	24.0

This size guide shows product measurements taken when products are laid flat. Actual product measurements may vary by up to 1".

Soft and comfortable fabric, close fitting and comfortable. The design of deep V-neck can show the charming collarbone. It can be worn on many occasions such as daily commuting, shopping, parties and so on. It is a good match for clothes.

- Fabric: Microfiber(95% polyester and 5% spandex)
- Regular fit
- Deep V-neck, short sleeve
- Fabric weight: 170g/m²
- Stitch Color: black or white, automatically matched based on patterns.
- Care Instruction: machine wash cold with similar colors, do not bleach, tumble dry low, do not iron, do not dry clean.
- This product is made on demand, with no minimum order quantity.
- Multiple shipping methods available, and fees vary depending on the location and the shipping method selected. Notice: a variety of factors may cause slight differences between the actual product and the mock-up, including but not limited to colors and precision of elements position.

Women's V-Neck Dress

\$27.64



inch	S	M	L	XL	2XL	3XL	4XL	5XL	6XL
Length	33.9	34.8	35.8	36.8	37.8	38.8	36.6	38.8	37.8
Bust	39.4	42.5	45.7	48.8	52.0	55.1	53.1	55.1	57.1
Shoulder	17.3	18.1	18.9	19.7	20.5	21.9	18.7	21.9	19.9
Sleeve	8.3	8.7	9.1	9.4	9.8	10.2	20.1	10.2	20.9

centimeter	S	M	L	XL	2XL	3XL	4XL	5XL	6XL
Length	84	85.5	87	88.5	90	91.5	93	94.5	96
Bust	105	110	115	120	125	130	135	140	145
Shoulder	38.5	40	41.5	43	44.5	46	47.5	49	50.5
Sleeve	45	46	47	48	49	50	51	52	53

This size guide shows product measurements taken when products are laid flat. Actual product measurements may vary by up to 1".

V-shaped neckline can help to better show your neck; Nice fabric can provide with all-day ease and comfort

- Fabric: 100% polyester
- Regular fit
- V-neck, short sleeves.
- Fabric weight: 140g/m²
- Stitch Color: black or white, automatically matched based on patterns.
- Care Instruction: machine wash cold with similar colors, do not bleach, tumble dry low, do not iron, do not dry clean.
- This product is made on demand, with no minimum order quantity.
- Multiple shipping methods available, and fees vary depending on the location and the shipping method selected Notice:a variety of factors may cause slight differences between the actual product and the mock-up, including but not limited to colors and precision of elements position..

Women's Square Collar Dress With Long Sleeve

\$35.05



inch	XS	S	M	L	XL	2XL
Length	30.3	30.9	31.5	32.1	32.7	33.3
Bust	32.3	33.9	35.4	37.8	40.2	42.5
Shoulder	14.8	15.2	15.6	16.1	16.7	17.3
Sleeve	23.2	23.6	24.0	24.6	25.2	25.8
Waist	26.0	27.6	29.1	31.5	33.9	36.2
Hip	33.1	34.6	36.2	38.6	40.9	43.3

centimeter	XS	S	M	L	XL	2XL
Length	77	78.5	80	81.5	83	84.5
Bust	82	86	90	96	102	108
Shoulder	37.5	38.5	39.5	41	42.5	44
Sleeve	59	60	61	62.5	64	65.5
Waist	66	70	74	80	86	92
Hip	84	88	92	98	104	110

This size guide shows product measurements taken when products are laid flat. Actual product measurements may vary by up to 1".

The unique square neckline design reveals a charming figure, and the waist tie adds some sense of line to the whole skirt

- Fabric: Jersey(95% polyester and 5% spandex)
- Regular fit
- Square collar, long sleeve, waist with belt
- Fabric weight: 180g/m²
- Printing process: Transfer printing.
- Stitch Color: black or white, automatically matched based on patterns.
- Care Instruction: machine wash cold with similar colors, do not bleach, tumble dry low, do not iron, do not dry clean.
- This product is made on demand, with no minimum order quantity.
- Multiple shipping methods available, and fees vary depending on the location and the shipping method selected. Notice: a variety of factors may cause slight differences between the actual product and the mock-up, including but not limited to colors and precision of elements position.

Women's Wings Dress

\$31.65



inch	S	M	L	XL
Length	28.1	28.5	28.9	29.3
Waist	25.0	27.2	28.0	29.1
Bust	31.1	31.9	33.9	35.0

centimeter	S	M	L	XL
Length	71.5	72.5	73.5	74.5
Waist	63.5	69.0	71.0	74.0
Bust	79.0	81.0	86.0	89.0

size guide shows product measurements taken when products are laid flat. Actual product measurements may vary by up to 1".

Backless design can make you sexy; Wings on the back can make you special; Loose style can be suitable for all kinds of body shape

- Fabric: Four-way stretch(95% polyester and 5% spandex)
- Regular fit; This product is inelastic
- Dress with wings on the back, shoulder straps are not customizable
- Fabric weight: 120 g/m²
- Thread Color: black or white for a single piece, automatically chosen using color approximation. Can not be customized.
- Average Lead Time: 2-4 business days(The first month delivery of new products is about 7 business days)
- Care Instruction: machine wash cold with similar colors, do not bleach, tumble dry low, do not iron, do not dry clean.
- This product is made on demand, with no minimum order quantity.
- Multiple shipping methods available, and fees vary depending on the location and the shipping method selected. Notice:a variety of factors may cause slight differences between the actual product and the mock-up, including but not limited to colors and precision of elements position.

Kids Sleeveless Vest Dress

\$28.45



inch	S	M	L	XL	2XL	3XL	4XL	5XL
Length	22.4	24.4	26.4	28.3	30.3	32.3	34.3	36.2
Shoulder	8.7	9.1	9.4	10.0	10.4	11.0	11.4	12.0
Waist	18.9	20.5	22.0	23.6	25.2	26.0	26.8	32.3

centimeter	S	M	L	XL	2XL	3XL	4XL	5XL
Length	57.0	62.0	67.0	72.0	77.0	82.0	87.0	92.0
Shoulder	22.0	23.0	24.0	25.5	26.5	28.0	29.0	30.5
Waist	48.0	52.0	56.0	60.0	64.0	66.0	68.0	82.0

This size guide shows product measurements taken when products are laid flat. Actual product measurements may vary by up to 1".

Design of sleeveless and large skirt can make your kids cool at summer; Soft fabric can provide all-day ease.

- Fabric: Jersey(95% polyester and 5% spandex)
- Regular fit
- Sleeveless vest dress
- Fabric weight: 180g/m²
- Thread Color: black or white for a single piece, automatically chosen using color approximation. Can not be customized.
- Average Production Time: 2-4 business days (The first month delivery of new products is about 7 business days)
- Care Instruction: machine wash cold with similar colors, do not bleach, tumble dry low, do not iron, do not dry clean.
- This product is made on demand, with no minimum order quantity.
- Multiple shipping methods available, and fees vary depending on the location and the shipping method selected. Notice: a variety of factors may cause slight differences between the actual product and the mock-up, including but not limited to colors and precision of elements position.

BodySuits

*Harmony
Designs*

A large, elegant black flourish or scrollwork design that starts from the bottom left and curves upwards and to the right, ending under the word 'Designs'.

Women's Round Neck Long Sleeve Bodysuit

\$34.25



Inch	S	M	L	XL	2XL
Length	27.0	27.4	28.1	28.9	29.3
Waist	26.4	28.0	30.3	32.7	35.0
Bust	30.7	32.3	34.6	37.0	39.4
Sleeve	22.4	23.0	23.4	23.8	24.2
Hip	30.3	31.9	34.3	36.6	39.0

centimeter	S	M	L	XL	2XL
Length	68.5	69.5	71.5	73.5	74.5
Waist	67	71	77	83	89
Bust	78	82	88	94	100
Sleeve	57	58.5	59.5	60.5	61.5
Hip	77	81	87	93	99

This size guide shows product measurements taken when products are laid flat. Actual product measurements may vary by up to 1".

The bodysuit can show your nice body shape and make you unique among people; Nice fabric can provide ease and comfort to you all day

- Fabric: Microfiber(95% polyester and 5% spandex)
- Skinny fit
- Round neck; long sleeve; bodysuit
- Fabric weight: 170g/m²
- Thread Color: black or white for a single piece, automatically chosen using color approximation. Can not be customized.
- Care Instruction: machine wash cold with similar colors, do not bleach, tumble dry low, do not iron, do not dry clean.
- This product is made on demand, with no minimum order quantity.
- Multiple shipping methods available, and fees vary depending on the location and the shipping method selected. Notice: a variety of factors may cause slight differences between the actual product and the mock-up, including but not limited to colors and precision of elements position.

Women's Raglan Sleeve Hooded Bodysuit

\$27.94



inch	XS	S	M	L	XL	2XL
Length	23.2	23.8	28.3	28.9	29.5	30.1
Bust	29.9	31.5	33.1	35.4	37.8	40.2
Waist	23.6	25.2	26.8	29.1	31.5	33.9
Sleeve	26.6	27.0	27.6	28.0	28.3	28.9

centimeter	XS	S	M	L	XL	2XL
Length	59	60.5	72	73.5	75	76.5
Bust	76	80	84	90	96	102
Waist	60	64	68	74	80	86
Sleeve	67.5	68.5	70	71	72	73.5

This size guide shows product measurements taken when products are laid flat. Actual product measurements may vary by up to 1".

Skinny style can help to show your nice body shape out; Fabric with good quality can provide you with all-day ease; Can be matched with jeans

- Fabric: Microfiber(95% polyester and 5% spandex)
- Skinny fit
- Raglan sleeved hooded jumpsuit
- Fabric weight: 170g/m²
- Thread Color: black or white for a single piece, automatically chosen using color approximation. Can not be customized.
- Care Instruction: machine wash cold with similar colors, do not bleach, tumble dry low, do not iron, do not dry clean.
- This product is made on demand, with no minimum order quantity.
- Multiple shipping methods available, and fees vary depending on the location and the shipping method selected. Notice: a variety of factors may cause slight differences between the actual product and the mock-up, including but not limited to colors and precision of elements position.

Women's Tank Bodysuit

\$23.63



inch	XS	S	M	L	XL	2XL
Length	27.8	28.3	28.9	29.5	30.1	30.7
Shoulder	13.0	13.4	13.8	14.4	15.0	15.6
Bust	29.1	30.7	32.3	34.6	37.0	39.4
Waist	24.0	25.6	27.2	29.5	31.9	34.3

centimeter	XS	S	M	L	XL	2XL
Length	70.5	72.0	73.5	75.0	76.5	78.0
Shoulder	33.0	34.0	35.0	36.5	38.0	39.5
Bust	74.0	78.0	82.0	88.0	94.0	100.0
Waist	61.0	65.0	69.0	75.0	81.0	87.0

This size guide shows product measurements taken when products are laid flat. Actual product measurements may vary by up to 1".

The full-width printed swimsuit can make you the most individual when on vacation by the sea! Simple and elegant cut make it a must-have classic swimwear

- Fabric : Microfiber(95% polyester and 5% spandex)
- Skinny fit
- Tank bodysuit
- Fabric weight: 180g/m²
- Stitch Color: black or white, automatically matched based on patterns.
- Average Production Time: 2-4 business days (The first month delivery of new products is about 7 business days)
- Care Instruction: machine wash cold with similar colors, do not bleach, tumble dry low, do not iron, do not dry clean.
- This product is made on demand, with no minimum order quantity.
- Multiple shipping methods available, and fees vary depending on the location and the shipping method selected. Notice: a variety of factors may cause slight differences between the actual product and the mock-up, including but not limited to colors and precision of elements position.

Women's Turtleneck Long Sleeve Bodysuit

\$33.50



inch	S	M	L	XL	2XL	3XL	4XL
Length	28.7	29.1	29.5	29.9	30.3	30.7	31.1
Sleeve	23.6	24	24.4	24.8	25.2	25.6	26
Bust	33.1	34.6	36.2	37.8	39.4	41.3	43.3
Shoulder	14.6	15	15.4	15.7	16.1	16.5	16.9
Waist	28	29.5	31.1	32.7	34.3	36.2	37.8
Hip	37.8	39.4	41.7	42.5	44.1	46.1	48

centimeter	S	M	L	XL	2XL	3XL	4XL
Length	73	74	75	76	77	78	79
Sleeve	60	61	62	63	64	65	66
Bust	84	88	92	96	100	105	110
Shoulder	37	38	39	40	41	42	43
Waist	71	75	79	83	87	92	96
Hip	96	100	106	108	112	117	122

This size guide shows product measurements taken when products are laid flat. Actual product measurements may vary by up to 1".

This sweater bodysuit feature with turtleneck which keep warm in cold days, ribbed fabric, long sleeve, slim fit and stretchy. Simple and basic style but trendy for any occasion

- Fabric: 80% polyester and 20% spandex
- Skinny fit
- Snap closure, turtleneck.
- Fabric weight: 230g/m²
- Stitch Color: black or white, automatically matched based on patterns.
- Average Lead Time: 2-4 business days
- Care Instruction: machine wash cold with similar colors, do not bleach, tumble dry low, do not iron, do not dry clean.
- This product is made on demand, with no minimum order quantity.
- Multiple shipping methods available, and fees vary depending on the location and the shipping method selected. Notice: a variety of factors may cause slight differences between the actual product and the mock-up, including but not limited to colors and precision of elements position.

Women's Short Sleeve Bodysuit

\$23.40



inch	XS	S	M	L	XL	2XL
Length	27.2	27.8	28.3	28.9	29.5	30.1
Bust	30.7	32.3	33.9	36.2	38.6	40.9
Shoulder	14.6	15.2	15.7	16.3	16.9	17.5
Sleeve	8.7	8.9	9.1	9.3	9.4	9.6
Waist	23.6	25.2	26.8	29.1	31.5	33.9

centimeter	XS	S	M	L	XL	2XL
Length	69	70.5	72	73.5	75	76.5
Bust	78	82	86	92	98	104
Shoulder	37	38.5	40	41.5	43	44.5
Sleeve	22	22.5	23	23.5	24	24.5
Waist	60	64	68	74	80	86

This size guide shows product measurements taken when products are laid flat. Actual product measurements may vary by up to 1".

The soft and comfortable one-piece suit, slightly elastic, does not appear very tight, but can well outline the figure

- Fabric: Microfiber(95% polyester and 5% spandex)
- Regular fit
- Short sleeve, crew neck
- Fabric weight: 170g/m²
- Care Instruction: machine wash cold with similar colors, do not bleach, tumble dry low, do not iron, do not dry clean.
- This product is made on demand, with no minimum order quantity.
- Multiple shipping methods available, and fees vary depending on the location and the shipping method selected. Notice: a variety of factors may cause slight differences between the actual product and the mock-up, including but not limited to colors and precision of elements position.

Women's Turtleneck Bodysuit With Zipper Closure

\$24.94



inch	S	M	L	XL	2XL
Length	27.0	27.4	28.1	28.5	29.3
Waist	26.4	28.0	29.5	32.7	35.0
Bust	30.7	32.3	34.6	37.0	39.4
Sleeve	22.4	23.0	23.2	24.0	24.4

centimeter	S	M	L	XL	2XL
Length	68.5	69.5	71.5	72.5	74.5
Waist	67.0	71.0	75.0	83.0	89.0
Bust	78.0	82.0	88.0	94.0	100.0
Sleeve	57.0	58.5	59.0	61.0	62.0

This size guide shows product measurements taken when products are laid flat. Actual product measurements may vary by up to 1".

The skin-tight fabric is soft and comfortable. The high-necked design and zipper opening and closing, you can have a variety of choices for display.

- Fabric: Microfiber(95% polyester and 5% spandex)
- Regular fit
- Turtleneck, zipper closure, long sleeve
- Fabric weight: 170g/m²
- Care Instruction: machine wash cold with similar colors, do not bleach, tumble dry low, do not iron, do not dry clean.
- This product is made on demand, with no minimum order quantity.
- Multiple shipping methods available, and fees vary depending on the location and the shipping method selected. Notice: a variety of factors may cause slight differences between the actual product and the mock-up, including but not limited to colors and precision of elements position.

Women's One-Shoulder Bodysuit

\$23.39



inch	XS	S	M	L	XL	2XL
Length	27.0	27.6	28.1	28.7	29.3	29.9
Bust	28.3	29.9	31.5	33.9	36.2	38.6
Waist	23.2	24.8	26.4	28.7	31.1	33.5

centimeter	XS	S	M	L	XL	2XL
Length	68.5	70.0	71.5	73.0	74.5	76.0
Bust	72.0	76.0	80.0	86.0	92.0	98.0
Waist	59.0	63.0	67.0	73.0	79.0	85.0

This size guide shows product measurements taken when products are laid flat. Actual product measurements may vary by up to 1".

Design of one-shoulder can make you more confident fashion; Skinny style can help to show your body shape out.

- Fabric : Microfiber(95% polyester and 5% spandex)
- Skinny fit
- One-shoulder bodysuit
- Fabric weight: 180g/m²
- Stitch Color: black or white, automatically matched based on patterns.
- Average Production Time: 2-4 business days (The first month delivery of new products is about 7 business days)
- Care Instruction: machine wash cold with similar colors, do not bleach, tumble dry low, do not iron, do not dry clean.
- This product is made on demand, with no minimum order quantity.
- Multiple shipping methods available, and fees vary depending on the location and the shipping method selected. Notice: a variety of factors may cause slight differences between the actual product and the mock-up, including but not limited to colors and precision of elements position.

JumpSuits

*Harmony
Designs*

A large, elegant black flourish or scrollwork element that starts from the bottom left and curves upwards and to the right, ending under the word 'Designs'.

Women's Long-sleeved High-neck Jumpsuit With Zipper

\$33.04



inch	XS	S	M	L	XL	2XL
Length	49.6	50.4	51.2	52.0	52.8	53.5
Bust	30.7	32.3	33.9	36.2	38.6	40.9
Shoulder	13.6	14.0	14.4	15.0	15.6	16.1
Sleeve	23.2	23.6	24.0	24.4	24.8	25.2
Waist	24.4	26.0	27.6	29.9	32.3	34.6
Hip	31.5	33.1	34.6	37.0	39.4	41.7

centimeter	XS	S	M	L	XL	2XL
Length	126	128	130	132	134	136
Bust	78	82	86	92	98	104
Shoulder	34.5	35.5	36.5	38	39.5	41
Sleeve	59	60	61	62	63	64
Waist	62	66	70	76	82	88
Hip	80	84	88	94	100	106

This size guide shows product measurements taken when products are laid flat. Actual product measurements may vary by up to 1".

The design of the jumpsuit will make you more sexy and charming, with a side zipper on the chest, which can be suitable for many scenes, such as fitness, evening parties, etc.

- Fabric: Microfiber(95% polyester and 5% spandex)
- Regular fit
- Zipper on chest and back, long sleeve, high neck
- Fabric weight: 170g/m²
- Care Instruction: machine wash cold with similar colors, do not bleach, tumble dry low, do not iron, do not dry clean.
- This product is made on demand, with no minimum order quantity.
- Multiple shipping methods available, and fees vary depending on the location and the shipping method selected. Notice: a variety of factors may cause slight differences between the actual product and the mock-up, including but not limited to colors and precision of elements position.

Women's Sleeveless Jumpsuit

\$26.49



inch	XS	S	M	L	XL	2XL
Length	32.3	32.9	33.5	34.3	35.0	35.8
Bust	28.3	29.9	31.5	33.9	36.2	38.6
Hip	29.9	31.5	33.1	35.4	37.8	40.2

centimeter	XS	S	M	L	XL	2XL
Length	82.0	83.5	85.0	87.0	89.0	91.0
Bust	72.0	76.0	80.0	86.0	92.0	98.0
Hip	76.0	80.0	84.0	90.0	96.0	102.0

This size guide shows product measurements taken when products are laid flat. Actual product measurements may vary by up to 1".

Can show your sexy body shape out; Suitable for party, club, evening, yoga and so on

- Fabric: 95% polyester and 5% spandex
- Skinny fit
- Sleeveless jumpsuit
- Fabric weight: 190 g/m²
- Thread Color: black or white for a single piece, automatically chosen using color approximation. Can not be customized.
- Average Lead Time: 2-4 business days(The first month delivery of new products is about 7 business days)
- Care Instruction: machine wash cold with similar colors, do not bleach, tumble dry low, do not iron, do not dry clean.
- This product is made on demand, with no minimum order quantity.
- Multiple shipping methods available, and fees vary depending on the location and the shipping method selected. Notice: a variety of factors may cause slight differences between the actual product and the mock-up, including but not limited to colors and precision of elements position.